

# PRODUCT DATASHEET

## LN COMP SWITCH 300 4 W 4000 K

LINEAR COMPACT SWITCH | Compact single or light line luminaire with switch



---

### AREAS OF APPLICATION

- Direct replacement for luminaires with fluorescent lamps
- Indoor applications
- Corridors, entrance areas, stairwells, living rooms, basements
- Accent lighting
- Public areas
- Cove lighting
- Shelves, furniture integration or under cabinet mounting
- Seamless linear lighting

---

### PRODUCT BENEFITS

- Compact dimensions
- Little space required thanks to compact dimensions
- Seamless connection of up to 10 luminaires in a line
- Handy switch directly installed on the luminaire
- Low flicker light thanks to special electronic control gear
- Flexible installation in 2 different angles with 2 different mounting options
- Flexible application due to a wide range of available lengths of 300 to 1200 mm.
- Angled connection possible with included cable

---

### PRODUCT FEATURES

- Built-in switch
- Up to 10 luminaires connectable
- Translucent end caps
- Versions with luminous flux 400...1500 lm available



- 4 different lengths available
- High luminous efficacy: up to 110 lm/W
- Glow Wire Test according to IEC 60695-2-12: 850 °C

## TECHNICAL DATA

### Electrical data

Nominal wattage	4.00 W
Nominal voltage	220...240 V
Power factor $\lambda$	>0.5
Mains frequency	50/60 Hz
Max. no. of lum. on circuit break. B16 A	40
Max. no. of lum. on circuit break. C10 A	32
Max. no. of lum. on circuit break. C16 A	51
Inrush current	15.0 A
Total harmonic distortion	88 %
Inrush current time $T_{h50}$	150 $\mu$ s

### Luminaire control gear data

Low flicker	Yes
Output current	50 mA

### Photometrical data

Color temperature	4000 K
Luminous flux	450 lm
Luminous efficacy	110 lm/W
Standard deviation of color matching	<5 sdc <sub>m</sub>
Light color (designation)	Cool White
Color rendering index Ra	>80

### Light technical data

Beam angle	140 °
------------	-------

Dimensions & weight



<b>Length</b>	313.0 mm
<b>Width</b>	28.0 mm
<b>Height</b>	36.0 mm
<b>Product weight</b>	119.00 g

Colors & materials

<b>Body material</b>	Polycarbonate (PC)
<b>Product color</b>	White
<b>Housing color</b>	White
<b>Cover material</b>	Polycarbonate (PC)
<b>Light emitting surface material</b>	Polycarbonate

Temperatures & operating conditions

<b>Ambient temperature range</b>	-20...+40 °C
----------------------------------	--------------

Lifespan

<b>Number of switching cycles</b>	100000
<b>Lifespan L70/B50 at 25 °C</b>	50000 h
<b>Lifespan L80/B10 at 25 °C</b>	40000 h
<b>Lifespan L90/B10 at 25 °C</b>	30000 h

Additional product data

<b>Mounting type</b>	Surface
<b>Mounting location</b>	Ceiling / Wall
<b>Low flicker</b>	Yes

Capabilities

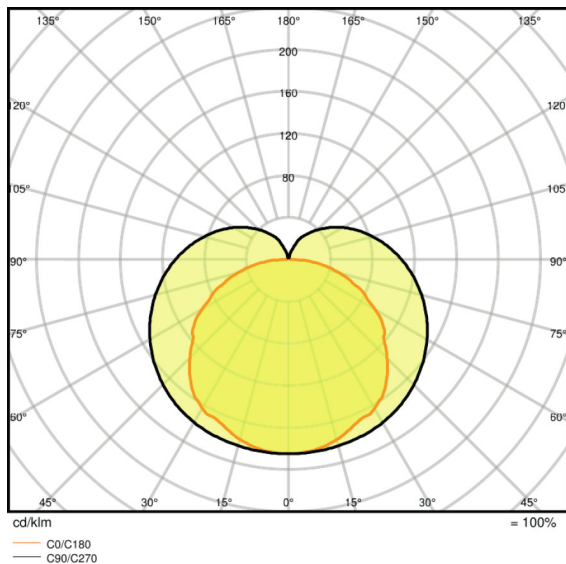
<b>Dimmable</b>	No
<b>Type of connection</b>	Screw terminal, 2-Pole (L,N)

<b>LED module replaceable</b>	Not replaceable
<b>Ball shot safe</b>	No

Certificates & standards

<b>Protection class IK (shock resistance)</b>	IK03
<b>Glow Wire Test according to IEC 60695-2-12</b>	850 °C
<b>Photobiological safety group EN62778</b>	RG0
<b>Protection class</b>	II
<b>Type of protection</b>	IP20
<b>Standards</b>	CE/CB/TÜV SÜD/EAC

Light Distribution



LDC typ polar

EQUIPMENT / ACCESSORIES

- Equipped with power plug, cable connector and line adapter for connecting further luminaires
- Mounting material for wall and ceiling installations included

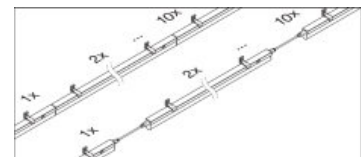
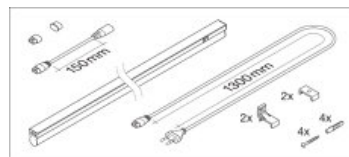
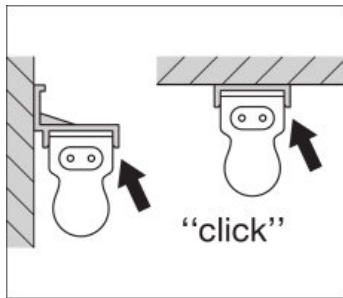
LOGISTICAL DATA

Product code	Packaging unit (Pieces/Unit)	Dimensions (length x width x height)	Gross weight	Volume
4058075106093	Folding carton box 1	42 mm x 29 mm x 580 mm	167.00 g	0.71 dm <sup>3</sup>

4058075106109	Shipping carton box 25	558 mm x 223 mm x 180 mm	4556.00 g	22.40 dm <sup>3</sup>
---------------	---------------------------	--------------------------	-----------	-----------------------

The mentioned product code describes the smallest quantity unit which can be ordered. One shipping unit can contain one or more single products. When placing an order, for the quantity please enter single or multiples of a shipping unit.

### ADDITIONAL CATALOG INFORMATION



### REFERENCES / LINKS

For Guarantee see

▶ [www.ledvance.com/guarantee](http://www.ledvance.com/guarantee)

### DISCLAIMER

Subject to change without notice. Errors and omission excepted. Always make sure to use the most recent release.